

Cybersecurity

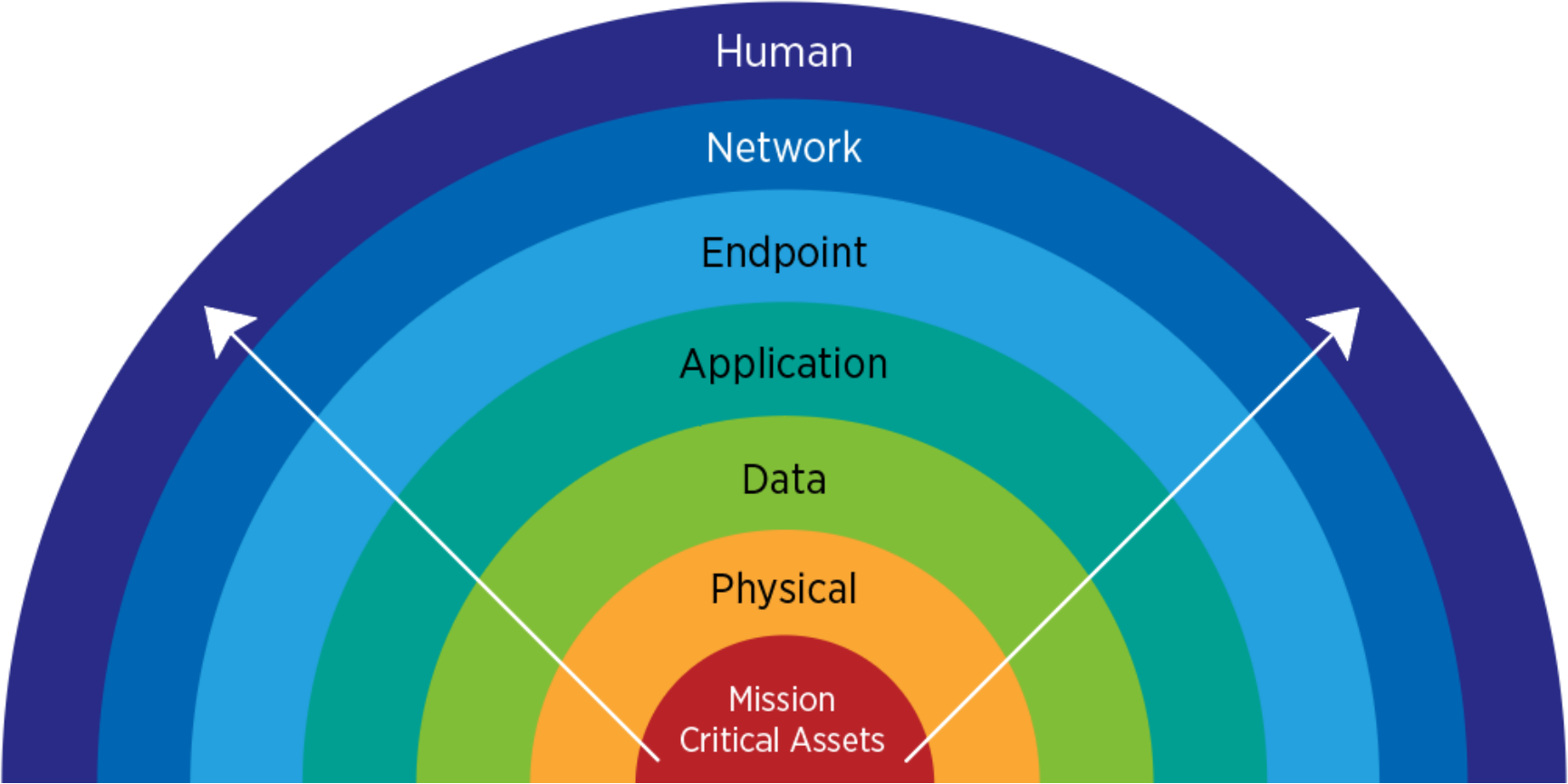
The preventative methods utilized to protect information from being stolen, compromised, or attacked.



F-35 vs J-31



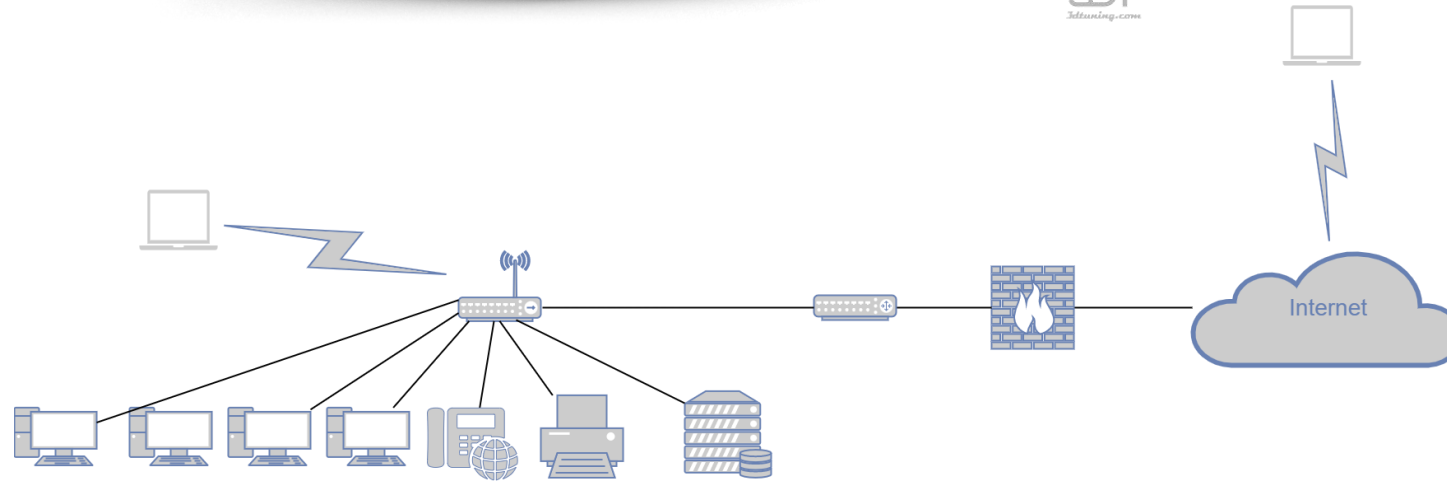
Risk



Flat Network Topology



3DT
3dtuning.com



Operational Technology (OT) and Evolving Cyber Threat

Under the bonnet

How a self-driving car works

Signals from **GPS (global positioning system)** satellites are combined with readings from tachometers, altimeters and gyroscopes to provide more accurate positioning than is possible with GPS alone

Lidar (light detection and ranging) sensors bounce pulses of light off the surroundings. These are analysed to identify lane markings and the edges of roads

Video cameras detect traffic lights, read road signs, keep track of the position of other vehicles and look out for pedestrians and obstacles on the road

Radar sensor

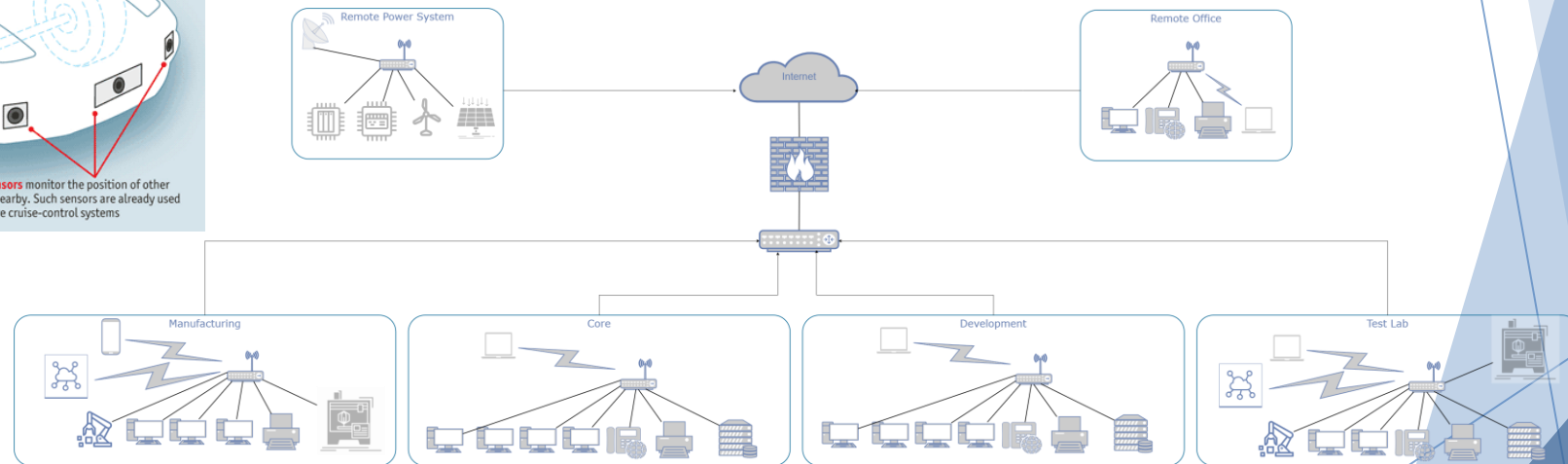
Ultrasonic sensors may be used to measure the position of objects very close to the vehicle, such as curbs and other vehicles when parking

The information from all of the sensors is analysed by a **central computer** that manipulates the steering, accelerator and brakes. Its software must understand the rules of the road, both formal and informal

Radar sensors monitor the position of other vehicles nearby. Such sensors are already used in adaptive cruise-control systems

Source: *The Economist*

- Remote Monitoring and Control
- SCADA
- PLC
- HMI (Windows IoT)
- IIoT



1st steps in closing the attack surface

- ▶ Compliance
 - ▶ Complete Risk Assessment (CMMC/NIST)
 - ▶ Evaluate OT/ICS Impact
 - ▶ Mitigate Risks
- ▶ Building strong relationships
 - ▶ IT Department / MSP
 - ▶ Vendor Relationships

